

PHYSICAL DISTANCING IS A PRIVILEGE

Amélie Quesnel-Vallée

Canada Research Chair in Policies and Health

Inequalities

Director, McGill Observatory on Health and Social

Services Reforms

McGill University





WHAT MAKES CANADIANS SICK?

50%

YOUR LIFE

- INCOME
- EARLY CHILDHOOD DEVELOPMENT
- DISABILITY
- EDUCATION
- SOCIAL EXCLUSION
- SOCIAL SAFETY NET
- GENDER
- EMPLOYMENT/WORKING CONDITIONS
- RACE
- ABORIGINAL STATUS
- SAFE AND NUTRITIOUS FOOD
- HOUSING/HOMELESSNESS
- COMMUNITY BELONGING

25%

YOUR HEALTH CARE

- ACCESS TO HEALTH CARE
- HEALTH CARE SYSTEM
- WAIT TIMES

15%

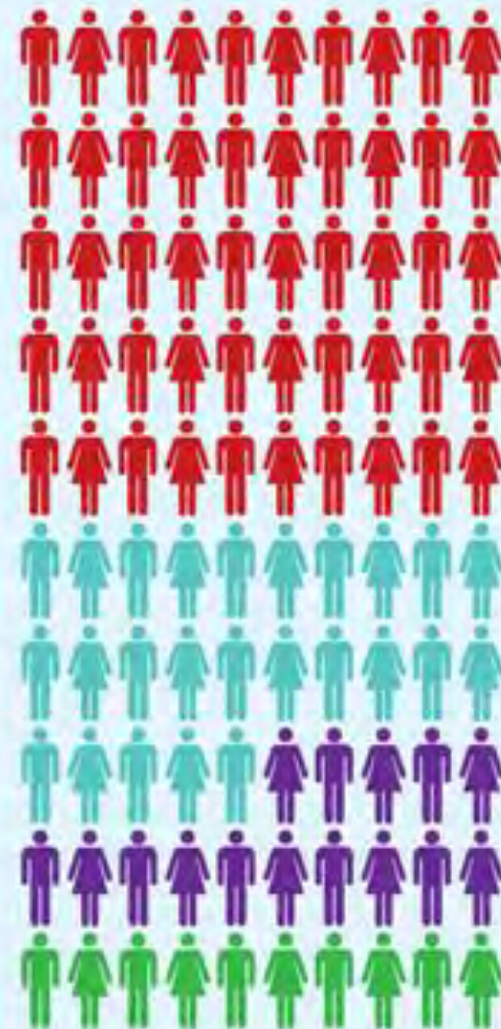
YOUR BIOLOGY

- BIOLOGY
- GENETICS

10%

YOUR ENVIRONMENT

- AIR QUALITY
- CIVIC INFRASTRUCTURE



THESE ARE CANADA'S SOCIAL DETERMINANTS OF HEALTH #SDOH



FROM "DISEASES OF AFFLUENCE" TO SOCIAL INEQUALITIES IN HEALTH

1949

-

1953

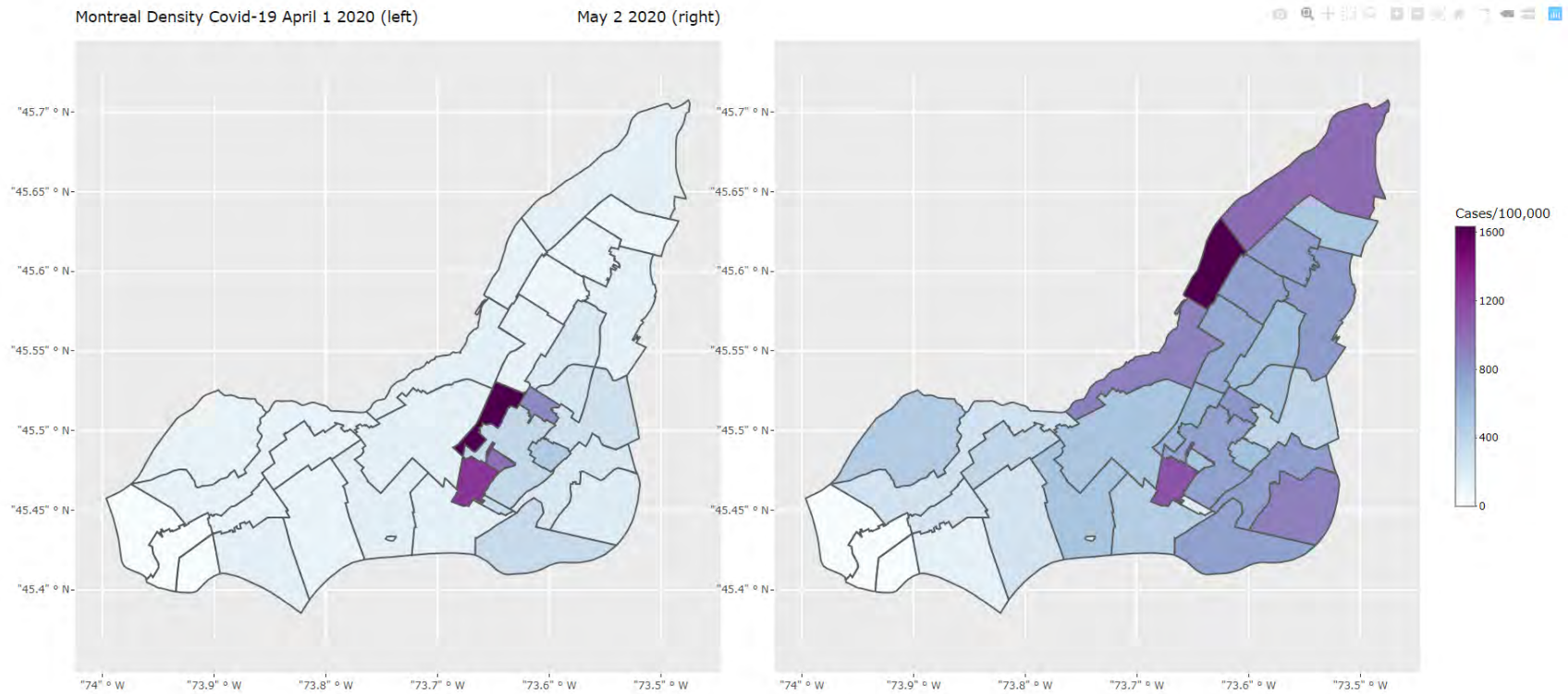
1991

-

1993

RGSC	Coronary disease	Diabetes	Cancers	TB
I	147	134	94	58
II	110	100	86	63
IV	79	85	95	95
V	89	105	113	143
I	63	54	78	32
II	73	70	79	47
IV	121	114	116	141
V	182	214	165	285





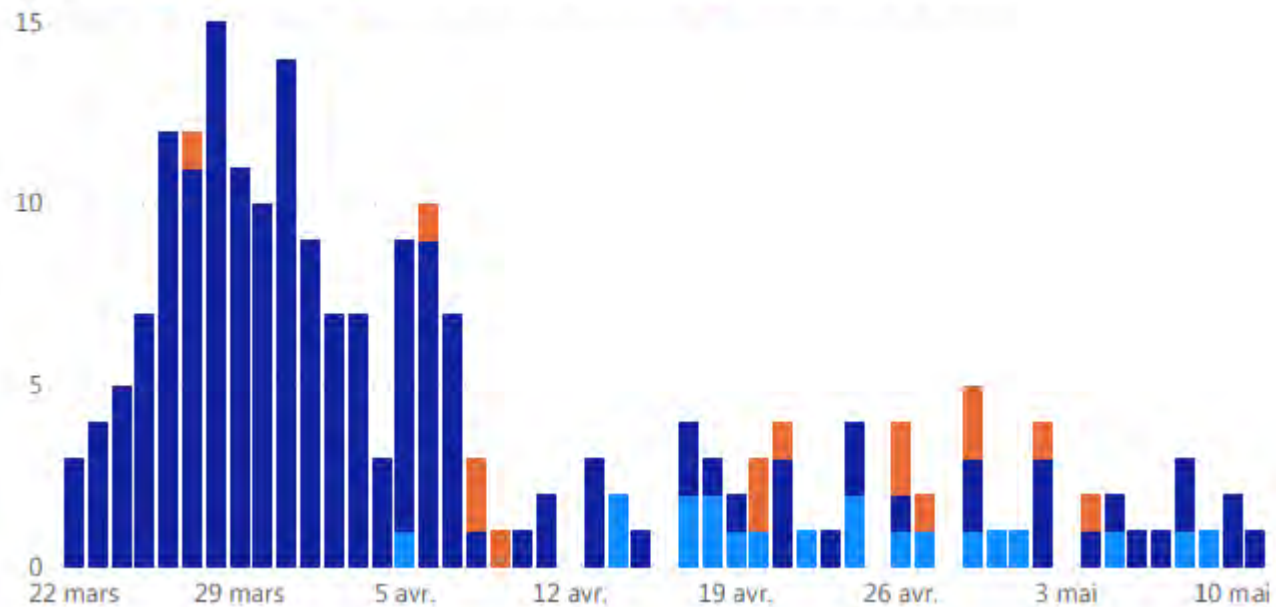
Source: https://www.brophyj.com/post/combined_map

OUTREMONT: HIGH INCOME, LOW DENSITY



Nombre de cas quotidien

Catégorie ● Milieu fermé ● Milieu ouvert ou inconnu ● Travailleur de la santé

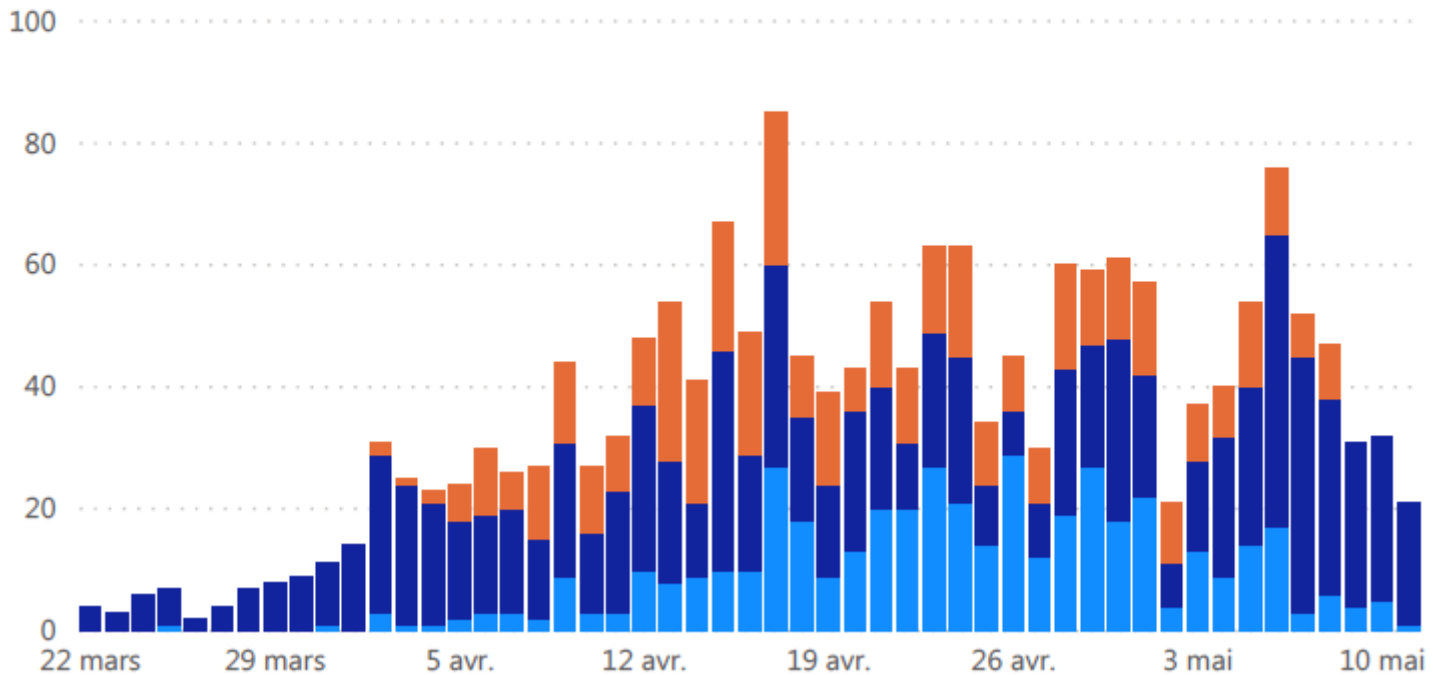


MONTREAL-NORD: LOW INCOME, HIGH DENSITY



Nombre de cas quotidien

Catégorie ● Milieu fermé ● Milieu ouvert ou inconnu ● Travailleur de la santé



The coronavirus pandemic is hitting black and brown Americans especially hard on all fronts



By **Harmeet Kaur**, CNN
 Updated 8:43 PM ET, Fri May 8, 2020



Search jobs My account ▾ Search ▾ International edition ▾

The Guardian

News Opinion Sport Culture Lifestyle More ▾

World ▶ Europe US Americas Asia Australia Middle East Africa Inequality Global development

Coronavirus outbreak

Ethnic minorities dying of Covid-19 at higher rate, analysis shows

Exclusive: ministers urged to recognise racial inequality and race are risk factors for disease

- Analysis: why are BAME people dying disproportionately?
- Case study: 'What's happening is not normal'

POLICY **OPTIONS** POLITIQUES 40 YEARS of shaping the debate

TOPICS SPECIAL FEATURES MULTIMEDIA EVENTS ABOUT

Canada's COVID-19 blind spots on race, immigration and labour

io Voce
1,217



COVID-19 impact on aggregate hours worked



*Hours are actual weekly hours on the main job. Values are the single-difference: (April2020-February2020)/February2020.

Source: Labour Force Survey (PUMFs)

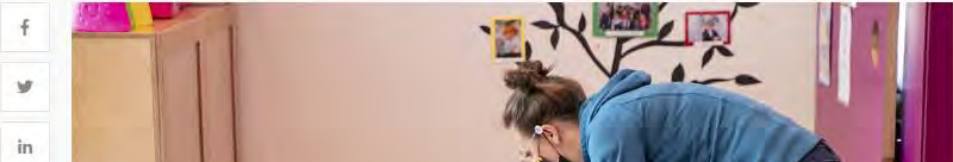


Women make up over half of COVID-19 deaths in Canada, counter to trends in most of world

LES PERREAUX >
 PUBLISHED MAY 20, 2020
 UPDATED MAY 21, 2020

91 COMMENTS SHARE

Ottawa aborde l'impact de la crise sur les femmes



Search jobs My account Search International edition

The Guardian

News Opinion Sport Culture Lifestyle More

Business Economics Banking Money Markets Project Syndicate B2B Retail

Coronavirus outbreak

'Pink-collar recession': how the Covid-19 crisis could set back a generation of women

The unique nature of the pandemic means the economic downturn could impact women for decades

[Full Story: How the coronavirus is affecting women's work in Australia](#)

Celina Ribeiro
 Sat 23 May 2020 21:00 BST

270






THE LESSONS

- The focus on the biological risk factors for COVID-19 (age, pre-existing conditions) at the exclusion of social factors obscured the role of the fundamental social causes of diseases
- Collecting data on those social fault lines should be an imperative
- But caution is warranted to avoid stigmatization of minority groups and equitable remedial actions