



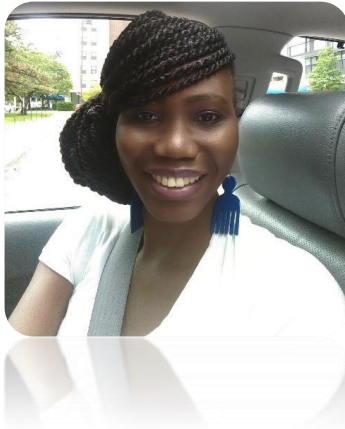
CAHSPR ACRSPS

Canadian Association for Health
Services and Policy Research

L'Association canadienne pour la
recherche sur les services et les
politiques de la santé

Student Working Group

ISABELLE DENA



Isabelle Dena is a second year PhD student at the University of Saskatchewan, Community Health and Epidemiology department. She has a Masters' of Arts degree in Social Work from the University of Southern Illinois University in Edwardsville, Illinois. Isabelle's research interest is in maternal and child health, mental health among immigrant and refugee populations, patient oriented research, qualitative methods. Her thesis proposal is on exploring maternity care experiences among newcomer women in Saskatoon, Saskatchewan specifically examining midwifery and physicians' models of care.