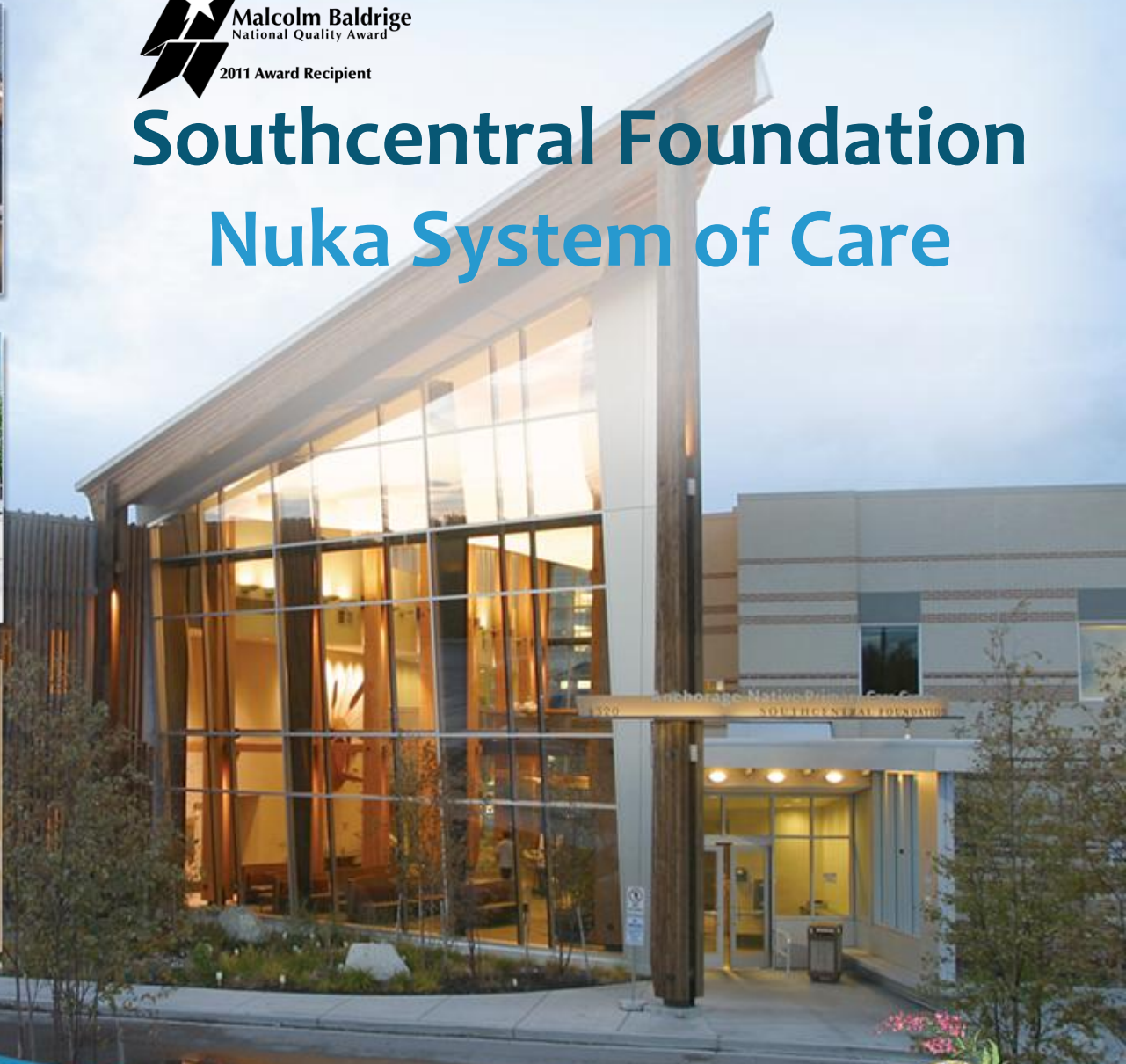




Southcentral Foundation Nuka System of Care



Southcentral
Foundation



Copyright © 2011 Southcentral Foundation. All Rights Reserved.

NOTICE: Unless otherwise indicated, this work represents copyrighted material protected by United States and international law.

This work may not be used, reproduced, downloaded, disseminated, published, transferred or transmitted, in whole or in part, in any form or by any means, electronic or mechanical, including photocopying, recording or information storage and retrieval, except with the express written permission of the publisher. This work may not be edited, altered, or otherwise modified, in whole or in part, except with the express written permission of the publisher.

Vision

A Native Community that enjoys physical, mental, emotional and spiritual wellness

Mission

Working together with the Native Community to achieve wellness through health and related services



Southcentral
Foundation



Southcentral Foundation Goals

Shared Responsibility
Commitment to Quality
Family Wellness



Research Review

Southcentral Foundation (SCF) review and approval of research is required...

- When Alaska Native/American Indian (AN/AI) participants are recruited at any SCF facility or the Alaska Native Medical Center campus.
- When research conducted will use information from the Alaska Native Medical Center health record.
- When SCF employees are engaged in the research.



SCF Research Review Criteria

- Alignment with SCF vision, mission, key points, goals, and objectives.
- Appropriate depiction and involvement of AN/AI people.
- Appropriate topic selection and handling.
- Quality of research design.

Thank You!

Qaġaasakung
Aleut

Quyanaq
Inupiaq

'Awa'ahdah
Eyak

Mahsi'
Gwich'in Athabascan

Igamsiqanaghalek
Siberian Yupik

Háw'aa
Haida

Quyana
Yup'ik

Way Dankoo
Tsimshian

Gunalchéesh
Tlingit

Tsin'aen
Ahtna Athabascan

Quyanaa
Alutiiq

Chin'an
Dena'ina Athabascan